

IN TUSCANY among nature and archaeology  
in the Parks and Museums of the Val di Cornia



PRESS OFFICE – Erika Grilli

tel. +39 0565 261408 - cell + 39 3483415648 - [ufficiostampa@parchivaldicornia.it](mailto:ufficiostampa@parchivaldicornia.it)



## WHERE WE ARE



### How to reach the Val di Cornia Parks:

The Val di Cornia Parks area is situated 80 km south of Livorno and is crossed by the SS1 Variante Aurelia, a freeway which goes from Rosignano to Civitavecchia. There are signs to the Parks at the exits to:

- San Vincenzo Nord,
- San Vincenzo Sud
- Piombino/Venturina
- Vignale/Riotorto





## WHO WE ARE

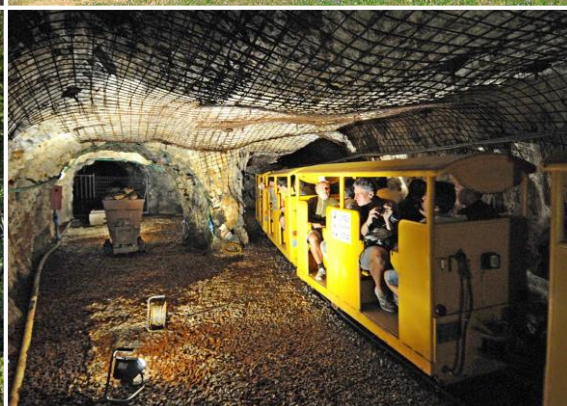
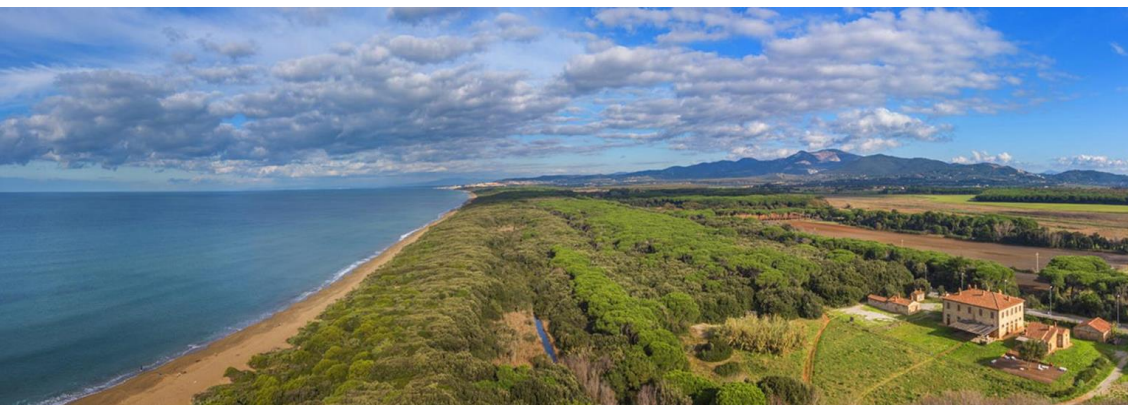
### PARKS AND MUSEUMS on the Tuscan coast

The Val di Cornia is the perfect spot for enjoying a unique experience in a territory rich in natural beauty and surprising archaeological testimonies; an exciting mix of art, culture, enogastronomy, wellbeing and nature, as well as plenty of relaxation and sport. Facing onto the Island of Elba, this valley is a valid alternative to the traditional destinations in Tuscany.

Immersed in this multi-faceted landscape, the parks and museums of the Val di Cornia represent a rich and varied offer, a different way of experiencing culture, with guided tours, experimental archaeological and environmental workshops and trekking trails.

A world to be discovered step by step, following the thread of the stories narrated by the ancient findings.

- Archaeological park of Baratti and Populonia
- Archaeological-mineral park of San Silvestro
- Archaeological Museum of the Territory of Populonia
- Artistic Museum of the Doll
- Rocca Aldobrandesca Museum
- Rocca di Campiglia Museum
- Permanent Museum Exhibition Carlo Guarnieri
- Sterpaia coastal park
- Forest park of Poggio Neri
- Regional Natural park of Montioni



## WHO WE ARE

### PARCHI VAL DI CORNIA SPA

Parchi Val di Cornia was established on 18 July 1993 by the Municipalities of Piombino, Campiglia Marittima, San Vincenzo, Suvereto and Sassetta along with other private partners, pursuant to article 22 of Italian law 142/1990 (now "Consolidated text governing local authorities, legislative decree no. 267/2000) as a mixed private-public ownership company, with the constraint of the prevalence of public capital.

In 2007, following an amendment to the existing law (Legislative Decree 42/2004, article 115), the company was forced to transform its set up into an entirely public shareholder structure.

#### The Company's mission is to:

- plan and implement actions to promote cultural and environmental resources;
- manage the services offered to the public in an integrated way.

#### How the company operates

In Parchi Val di Cornia Spa, business and economic aspects go hand in hand with the protection of the environmental and historical heritage. An innovative project that, leveraging the cultural and tourism business, has transformed the traditional industrial and metal-working vocation of Val di Cornia, located in the southern part of the province of Livorno, and has recorded a significant increase in the tourist footfall over the last 10 years. The company operates in a networked system, that integrates cultural and tourist services: archaeological and nature parks, museums, documentation services, hostels, bathing establishments. Every park has its own visitor centre, refreshment point and spaces for educational activities and workshops.

#### An innovative model for managing and using cultural resources

The long-standing experience of Parchi della Val di Cornia Spa represents a successful example of the management of cultural resources, starting from the planning of the territory through to the results achieved as a cultural enterprise in the territory of Val di Cornia.

Italian standard-bearer at the first edition of the Landscape Award 2009, since 2008 the Park system has also received the important "Blue Flag" for the Sterpaia coastal park.



## DISCOVER THE VAL DI CORNIA

### Piombino

Stretching out into the sea, Piombino is a city with a wealth of history surrounded by a properly-safeguarded natural environment. A walk through piazza Bovio is unforgettable, with its magnificent views out over the islands of the Tuscan archipelago.

### Il castello di Populonia

A small medieval castle, high atop the promontory of Populonia, looking down over Baratti bay.

### Campiglia Marittima

Campiglia Marittima today is one of the most suggestive and best-preserved medieval villages of the Costa degli Etruschi. The historical centre is dominated by the Rocca fortress, which has public gardens and a museum within its walls.

### Venturina terme

You come down from the hills along a road flanked by terracing and centuries-old olive groves, arriving in Venturina Terme, where the thermal park has hospitality facilities and spa establishments.

### Suvereto

Suvereto is a fascinating village, still today surrounded by its walls. The cork woods, in Italian 'sughero', together with the varied scents of the Mediterranean scrub, the vines and the centuries-old olive trees, give the countryside here an exclusive feel.

### Sassetta

A tiny, adorable historic village, Sassetta is perched on the top of a spur of rock. The village is lost amid the greenery of woodlands rich in paths for trekking and organised trackways for walking, cycling and horse-riding. There is also a spa.

### San Vincenzo

Famed for its white sandy beaches, and for its wide range of tourist services, S. Vincenzo is a resort where you can spend a relaxing holiday all year round.





## ARCHAEOLOGICAL PARKS

# ARCHAEOLOGICAL-MINERAL PARK OF SAN SILVESTRO (Campiglia M.ma)

Located behind Campiglia Marittima and the promontory of Piombino, the park extends through what was once the mining district of Campiglia. A visit to the park represents an authentic itinerary below and above ground, amidst the mining tunnels and pathways of historical, archaeological and naturalistic interest dominated on high by the medieval village of Rocca San Silvestro. **News 2022** - it's possible to combine Rocca San Silvestro with a visit to the Fornelli di Monterombolo: a journey into the history of the exploitation of the park's minerals and rocks.

## Guided tour to:

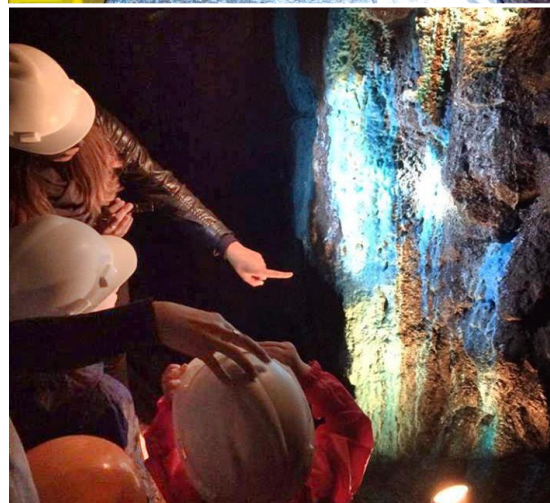
**Temperino Mine:** with a miner's helmet firmly in place, your exploration of the Temperino Mine can begin, discovering the rocks and minerals of the metalliferous deposits at Campiglia. Traces of the miners' work can be seen everywhere, reminders of the hardships and dangers of their craft. Along the route you can see both the ancient and modern mining techniques as well as the most interesting metalliferous rocks and minerals in the various historical periods.

**Lanzi-Temperino tunnel:** with its mining train is one of the main attractions of the Archaeological Mines Park of San Silvestro. In the tunnel, visitors can admire the shapes and colours of the minerals and the large and fascinating central extraction hall. The minerals extracted in the enormous underground mines were loaded onto wagons and transported along the reduced gauge railway line laid in the tunnel to the Valle Lanzi crushing and flotation plants.

**Rocca di San Silvestro:** a medieval village overlooking the valleys of Campiglia, the ambition of an aristocratic family, the history of the miners who lived there for more than three hundred years, the reconstruction of one of their houses to demonstrate the difficulties of their everyday life, these are the ingredients of the visit to this unique and extraordinarily well-preserved site.

## **During the Middle Ages: a leap back in time to the year one thousand**

One of the many points of interest at the Rocca is the possibility of enjoying the unique experience of taking a leap back to the year one thousand, thanks to the reconstruction of a medieval house built thanks to an important of Experimental Archaeology project and the melting furnaces: an unusual way to discover everyday life in the past. Since 2018, the Rocca lights up in summer with special openings in the evocative evening atmosphere.





## ARCHAEOLOGICAL PARKS

### ARCHAEOLOGICAL PARK OF BARATTI AND POPULONIA

(Piombino)

One of the most powerful Etruscan settlements, Populonia is a town of great charm, immersed in a unique natural setting. From the sea in the Gulf of Baratti, dominated by the burial places of the warrior princes, to the Mediterranean scrub that conceals incredible tombs carved out of the rock, until reaching the acropolis with its sacred buildings facing onto the islands of the Tuscan archipelago, Populonia is an unforgettable experience.

#### Guided tour to:

**Necropolis of San Cerbone:** the oldest monumental Etruscan tombs of Populonia (VII-V century BC). During the tour you will see different types of Etruscan tombs, from the princely mounds such as the Tomba dei Carri, to the aedicula tombs such as the Tomba del Bronzetto di Offerente, through to the later cassone and sarcophagus tombs.

**Necropolis of the Caves:** located on the wooded hill overlooking the Gulf of Baratti, this necropolis was used between the 4th and 3rd centuries BC, when San Cerbone had already become an industrial district of Populonia. In the area around Le Grotte there are rock-cut chamber tombs.

**Acropolis of Populonia:** At the top of the acropolis, in Populonia Alta, you can admire the remains of the Etruscan city under Roman dominion: the holy road, a luxurious house with mosaics and the Logge thermal baths, with extraordinarily well preserved polychrome architecture. Going up to the terrace of the Logge, the view is astonishing, as are the archaeological remains of the thermal baths, with excavations in progress and the exceptional Mosaic of the Blacks, uncovered and restored.



#### **Experimental archaeology: learning while having fun**

A great feature of the park is the laboratory activity held in the "Davide Mancini" experimental archaeology centre in the park in the Necropolis area. In days and with pre-established modes, adults and children, guided by expert operators, can try reproducing objects and tools with the techniques of the ancient trades. One more reason to visit the park to discover its history and enjoy a family day!



## MUSEUM

# ARCHAEOLOGICAL MUSEUM OF THE TERRITORY OF POPULONIA (Piombino)

Situated in front of the sea, in the historic centre of Piombino, the princely palace of Napoleon's sister, Elisa Baciocchi, houses one of the most important archaeological museums in all of Tuscany with over 2,000 exhibits on display.

An inviting museum with air-conditioned rooms that proposes a journey through the ancient territory of Populonia: a **chronological itinerary from Prehistory to Late Antiquity**.

Starting from the first example of prehistoric art, we move on to the early bronze and iron artefacts, and then see how the **Etruscans** worked precious metals, how they ate at banquets, and how they honoured their dead, accompanied by the music of the **ancient instruments reconstructed** and exhibited in the museum.

The **multisensorial tour** is a unique experience with models of the three symbols of ancient Populonia: the famous Tomba dei Carri that can be visited in the Park, the **mosaics with a seascape** from the Acropolis of Populonia, and the **Silver Anfora of Baratti**, a unique piece recovered from the depths of the sea.

**News:** new exhibition with the "celestial" chariot of Populonia





## I MUSEI

### ARTISTIC MUSEUM OF THE DOLL

(Suvereto)

The Artistic Museum of the Doll preserves the extraordinary collection of Maria Micaelli. More than 50 dolls, dating from the end of 1800 to the 1980s, with unique pieces and real masterpieces of art and craftsmanship from the most important manufactories in Italy. An unusual and surprising itinerary, which, besides the evolution of costume, styles, materials and techniques - from porcelain to cloth and celluloid, along with pannolenci, fabric and papier-mache - illustrates some of the most important of the recent Italian history. Particularly remarkable are the dolls produced by Lenci of Torino, an historical manufactory: among them we can find Violetta (1925), symbol of the Museum, inspired by the protagonist of "La Traviata", a famous opera by Giuseppe Verdi.





## I MUSEI

### THE ROCCA ALDOBRANDESCA MUSEUM (Suvereto)

The ancient Rock is the symbol of Suvereto: from the tower that the Aldobrandeschi dynasty built as a guard for their feud in Maremma, to the Pisan fortress in the 14<sup>th</sup> century, it has always represented the history and identity of this village.

In the rooms of the Museum in the inside, historic facts and important characters come back to life, from Emperor Arrigo VII to Princess Elisa Bonaparte Baciocchi, and along with them the characteristic traits of a free and open place, always interested by transhumance and wine production.





## I MUSEI

### THE ROCCA OF CAMPIGLIA MARITTIMA (Campiglia Marittima)

The San Silvestro Archaeological Mines Park visit will include a visit to the Rocca of Campiglia Museum situated in the historic centre of this charming medieval village.

The ancient ruined castle dominating the Val di Cornia has recently been carefully restored and is now open to visitors.

Panels provide the visitor with historic back-ground information, and the museum set up in the "dungeon" houses archaeological finds illuminating the daily life of the important medieval village of Campiglia.





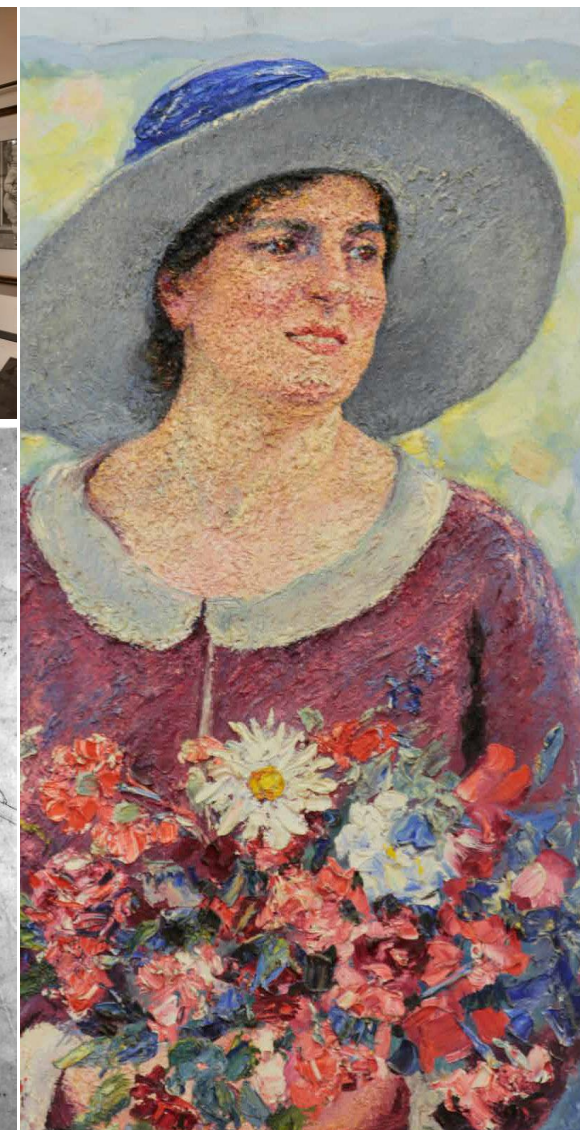
## I MUSEI

### THE PERMANENT MUSEUM EXHIBITION CARLO GUARNIERI (Campiglia Marittima)

The Museum, situated inside the palazzo Pretorio, mainly collects xylographies, but also studies, drawings and paintings of the artist Carlo Guarnieri.

It is an important donation of the Guarnieri family that includes the whole creative period of the artist, one of the protagonists of Italian Art History in the early '900.

The artworks, after being exhibited in national and international fairs and in some of the most important galleries in the world, came back in their town of origin, Campiglia Marittima.





## NATURAL PARKS



### Coastal Park of Sterpaia (Piombino)

Overlooking a portion of the Gulf of Follonica is a small natural oasis where it is possible to observe the traces of the ancient landscape of the coastal areas of the Maremma. The typical landscapes of the Mediterranean coast follow one after the other, allowing us to discover a crystalline sea, as well as the woods, pine forests and sandy dunes.

### Regional Natural Park of Montioni (Suvereto)

This is a forest that stretches for 7,000 hectares at the far ends of the borders of the Provinces of Livorno and Grosseto, with countless tracks once traversed by woodcutters, coalmen, shepherds and hunters. In addition to the naturalistic aspects, there are also the remains of several alum quarries and the mining village from Napoleon's time. The ruins of the thermal spa frequented by the Princess of Piombino, Elisa Bonaparte Baciocchi, are still visible today.

### Forest park of Poggio Neri (Sassetta)

The testimonials of an ancient economy made of coal, chestnuts and hunting are well visible in this Park, where you can discovery the ancient life and trades in the forest, and particularly the disappeared world of the charcoal burners.



## pArcheoCARD

### A TOOL FOR DISCOVERING THE TERRITORY

To help the visitor discover this area rich in traditions, culture, gastronomy, a useful tool is available, the pArcheoCARD.

Delivered with the entrance ticket to one of the archaeological parks or museums of the system, it allows to obtain:

- 50% discount on visits and entrances to archaeological parks and museums of the Val di Cornia Parks System
- reductions at the agreed tourist-accommodation facilities
- reductions on admissions in other Parks and Centers



### Info and booking:

[www.parchivaldicornia.it](http://www.parchivaldicornia.it) - [prenotazioni@parchivaldicornia.it](mailto:prenotazioni@parchivaldicornia.it)

tel. 0565 226445 – fax 0565 226521



PRESS OFFICE – Erika Grilli:  
ufficiostampa@parchivaldicornia.it  
tel. 0565 261408 – cell. 348 3415648

Press kit and insights

